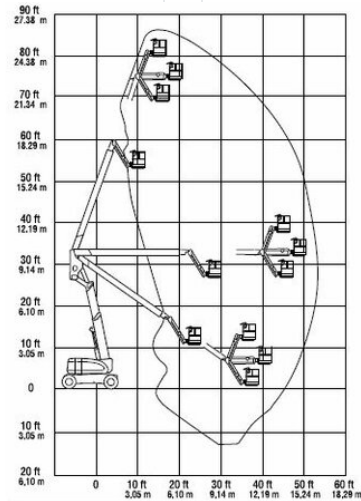


# Articulated Boom Lift MT 263HA

## Telescope Work Platforms

### Product features

- note.Mit Hybrid-Allradantrieb
- Battery drive/diesel Engine
- non marking tyres
- Basket jib



### Technical data

|                             |                           |
|-----------------------------|---------------------------|
| <b>Max. Working Height</b>  | 26.38 m                   |
| <b>Max. Platform Height</b> | 24.38 m                   |
| <b>Slewing</b>              | 360°                      |
| <b>Platform length</b>      | 1.83 m                    |
| <b>Platform width</b>       | 0.9 m                     |
| <b>Capacity</b>             | 230 kg                    |
| <b>Platform rotation</b>    | 2 x 90°                   |
| <b>Transport length</b>     | 11.13 m                   |
| <b>Transport width</b>      | 2.49 m                    |
| <b>Height</b>               | 2.65 m                    |
| <b>Gross weight</b>         | 16,111 kg                 |
| <b>Drive</b>                | Dieselallrad und Batterie |
| <b>Inclination across</b>   | 4 °                       |
| <b>Inclination along</b>    | 4 °                       |

**SALZBURG** Bayernstraße 47, 5071 Wals | Phone 0043 / 662 / 85 45 74 | [salzburg@maltech.com](mailto:salzburg@maltech.com)

**VIENNA** Laxenburgerstraße 246B, 1230 Wien | Phone 0043 / 1 / 616 22 44 | [wien@maltech.com](mailto:wien@maltech.com)

**GRAZ** Industriezeile 1, 8401 Kalsdorf | Phone 0043 / 3135 / 53 202 | [graz@maltech.com](mailto:graz@maltech.com)

**HALL IN TYROL** Schlöglstraße 24, 6060 Hall in Tirol | Phone 0043 / 5223 / 52 022 | [hall@maltech.com](mailto:hall@maltech.com)

**LINZ** Gewerbepark 11, 4052 Ansfelden | Phone 0043 / 7229 / 79 655 | [linz@maltech.com](mailto:linz@maltech.com)

**ST. PÖLTEN** Hugo von Hofmannsthalstraße 4, 3100 St. Pölten | Phone 0043 / 1 / 616 22 44 | [stpoelten@maltech.com](mailto:stpoelten@maltech.com)

**GYŐR | DEBRECEN | BUDAPEST | BRATISLAVA | KOSICE**