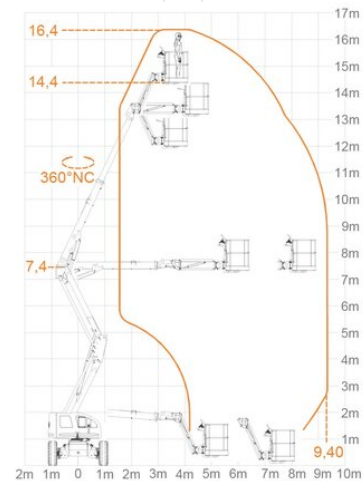


Telescopic Articulated Boom Lift MT 168DAS

Telescope Work Platforms

Product features

- Hydraulic outriggers
- With rotatable basket
- 230 V Powersupply in basket
- Basket jib
- Diesel all wheel drive



Technical data

Max. Working Height	16.8 m
Max. Platform Height	14.8 m
Slewing	360°
Platform length	0.86 m
Platform width	1.8 m
Capacity	230 kg
Platform rotation	2 x 90°
Transport length	7.8 m
Transport width	2.19 m
Height	2.26 m
Gross weight	8,050 kg
Drive	Diesel-Allrad
Inclination across	5 °
Inclination along	5 °

SALZBURG Bayernstraße 47, 5071 Wals | Phone 0043 / 662 / 85 45 74 | salzburg@maltech.com

VIENNA Laxenburgerstraße 246B, 1230 Wien | Phone 0043 / 1 / 616 22 44 | wien@maltech.com

GRAZ Industriezeile 1, 8401 Kalsdorf | Phone 0043 / 3135 / 53 202 | graz@maltech.com

HALL IN TYROL Schlöglstraße 24, 6060 Hall in Tirol | Phone 0043 / 5223 / 52 022 | hall@maltech.com

LINZ Gewerbepark 11, 4052 Ansfelden | Phone 0043 / 7229 / 79 655 | linz@maltech.com

ST. PÖLTEN Hugo von Hofmannsthalstraße 4, 3100 St. Pölten | Phone 0043 / 1 / 616 22 44 | stpoelten@maltech.com

GYŐR | DEBRECEN | BUDAPEST | BRATISLAVA | KOSICE